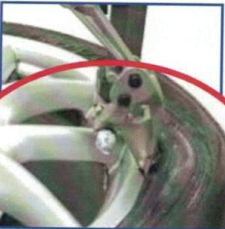
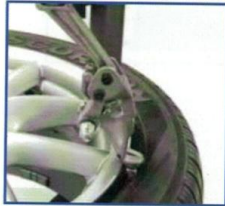


# FRONTLINE

*It's So Easy,  
It's Leverless!*



"NO BARS"



\*SHOWN WITH OPTIONAL HELPER ARMS.

## INTRODUCING: FRO-TT626V

A powerful, easy to use, leverless high powered tire changer with variable rotation speed. Completely leverless; this machine is equipped with the patented "SLIVO" design. The slim but durable head design, easily pulls the bead over the demount head, WITH NO BARS involved. The risk of damaging a wheel with a bar is eliminated. The slim design is preferred by techs because the head does not interfere with certain raised center wheels.

As for the rest of the machine, the durable welded and reinforced cabinet maximizes rigidity. Dual table top cylinders provide a low profile, high clamping force, with no slip design.

This machine is designed to take the punishment of changing difficult wheel and tire assemblies. The variable speed rotation makes for fast demounting and mounting with smooth and accurate control. The optional multi use pneumatic "HELPER" arms. These arms are there for additional help to the tech when needed.

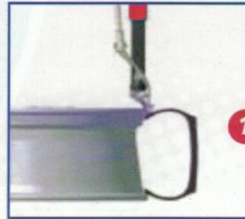
## FRO-TT626V

\*SHOWN WITH OPTIONAL HELPER ARMS.

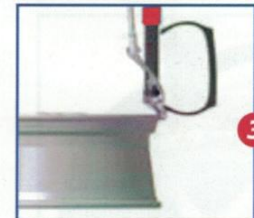


**PATENTED  
LEVER-FREE  
TOOL**

Fits between the tire and rim and takes hold of the bead.



The exclusive SLIVO working movement allows to catch the lower bead with no use of the PLUS device.



Chucking table with adjustable positioning of clamps (2 slots).

12" - 28"



1143 mm (45")



431 mm (17")

## Features

### Patented Lever-Free Tool "SLIVO"

Fits between the tire and rim and takes hold of the bead, gradually lifting it without the aid of tire bar.

The exclusive SLIVO working movement allows it to catch the lower bead.

**The cabinet is large and reinforced**, to grant the utmost rigidity to the structure and chucking table.

The gear box is installed between two steel plates, to avoid flex during operation.

### Self-centring chuck

- Variable speed rotation for smooth and accurate control
- High torque
- High clamping force

3 PIECE CONE SET

QUICK NUT

## TECHNICAL DATA

Rotation motor	Invertor Variable Speed
Chuck rotation speed	Variable
External clamping	10" - 24" / 254 mm - 609 mm
Internal clamping	12" - 28" / 305 mm - 711 mm
Max. tire diameter	45" / 1143 mm
Max. rim width	17" / 431 mm
Bead breaker cylinder power at 12 bar	8000 lbs / 3600 kg
Recommended air	120 - 150 PSI
Power supply	220 V / 1 Phase / 15 AMP
Plug receptacle	HBL4560

TIRE RUN OUT SENSOR

PROFESSIONAL EXTERNAL DATA GAUGE